



Fisherbrand™
QUALITY. RELIABILITY. VALUE.

Rockers, Rotators and Mini Shakers

Equipment for gentle sample mixing or agitation

Rock, Rotate or Shake

Give your samples the smooth, carefully calibrated movement they require with our comprehensive selection of constantly-in-motion rockers, rotators and shakers



Mini tube rotator

Fisherbrand mini tube rotators accommodate 1.5mL to 50mL tubes. Adjustable digital speed control and agitation mode allow for a wide variety of applications

- Small footprint fits easily into refrigerators and non-CO₂ incubators
- Digital RPM display
- Quiet operation
- Paddles are easily adjustable/interchanged - each can be adjusted from 0-90°
- Achieve more effective mixing with 'agitation' mode
- Agitation will occur at every 40 degrees in the rotation cycle. The combination of rotation and oscillation provides more effective mixing
- Extra paddles are needed if using all same size tubes (except for 50mL size) because tube rotator only fits one 50mL paddle at a time (example: if using all 5mL tubes, will need to order one extra pack of 2 x 5mL/7mL paddles)
- The mini tube rotator can be utilised across a broad spectrum of scientific disciplines including but not limited to molecular biology, clinical, and biochemistry
- Two year warranty



Specification and ordering information

Cat. No	15534080
Plus Type(s)	EU, UK, CN
Electrical	100-240V, 0.1A, 2.5W, 50/60Hz
Speed range	10-40rpm
Speed accuracy	±1rpm
Operation temperature	5 to 60°C
Maximum capacity	84 x 0.5mL/0.8mL tubes, 60 x 1.5mL/2.0mL tubes, 28 x 5mL/7mL tubes, 28 x 10mL/15mL tubes, 6 x 50mL tubes
Unit includes:	2 x 10mL/15mL paddles 2 x 5mL/7mL paddles 2 x 1.5mL/2mL paddles 1 x 50mL paddle

Optional accessories:

Cat. No	Description
15554140	Two paddles for 0.5mL/0.8mL tubes
15544140	Two paddles for 1.5mL/2mL tubes
15534140	Two paddles for 5mL/7mL tubes
15524140	Two paddles for 10mL/15mL tubes
15564140	Paddle for 50mL tubes



Certification: CE (88861052) & cCSAus (88861051)

Digital CO₂ and humidity resistant bottle/tube roller

These sleek and compact bottle/tube rollers are capable of rolling multiple sizes of tubes or bottles. Adjustable digital speed control accommodates a variety of applications

- Anti-corrosive and wear resistant construction enables use in humid and CO₂ environments
- Adjustable rollers accommodate a variety of tube/bottle sizes
- Stacking kit allows you to stack units two high, saving valuable bench space
- Optional remote control facilitates operating unit while in incubator and adds timer function
- Includes 'O' rings for smooth rolling of 15mL or 50mL tubes
- Applications:
 - Cell culture
 - Hybridisation assays
 - Liquid mixing
 - Bioproduction
- Two year warranty



Specification and ordering information

Cat. No	15376617
Plug types	EU, UK, CN
Electrical	100-240V AC, 50-60Hz
Speed range	1-80rpm
Operation temperature	4 to 60°C
Maximum capacity	11 rollers
Maximum bottle diameter	120mm/4.72in
Unit includes:	6 rollers

Optional accessories:

Cat. No	Description
15386617	Additional rollers (pack of two)
15316627	Stacking kit
15326627	Remote control

Certification: CE & cCSAus



Nutating mixer - variable speed

Fisherbrand nutating mixers deliver gentle uniform mixing of fluids in tubes, plates, culture flasks and dishes

- Variable speed from 2-60rpm offers gentle continuous mixing of samples
- 306mm x 266mm platform accommodates a variety of tubes and vessels
- Display will show last used settings, even after power has been turned off
- Operating temperature range: 5 to 40°C, usable in non-CO₂ incubators, refrigerators and chambers
- Continues to run by last set speed and the remaining time when the power is recovered
- Continuous or timed operation with automatic switch-off
- Audible and visual alarm when the set time reaches zero
- Two year warranty



Specification and ordering information

Cat. No	15594070
Plug types	EU, UK, CN
Electrical	100-240V, 1A, 9.5W, 50/60Hz
Speed range	2-60rpm
Speed accuracy	±1rpm
Tilt angle	20°
Timer	0min to 99h 59min
Maximum weight capacity	0.8kg (1.8lb)
Shipping weight	6kg (13.2lb)
Display	LED
Tray material	Aluminium
Tray dimensions (L x W)	306 x 266mm, 12 x 10.5 inch
Overall dimensions (L x W x H)	415 x 293 x 273mm, 16.3 x 11.5 x 10.7 inch
Unit includes:	Dimpled rubber mat & six tube-securing bands

Certification: CE (88861044) & cCSAus (88861043)

Nutating mixer - fixed speed

Fisherbrand nutating mixers deliver gentle uniform mixing of fluids in tubes, plates, culture flasks and dishes

- Budget friendly design
- Easy to use, plug and play operation
- Fixed-speed movement at 20° angle
- Operating temperature range: 5 to 40°C, usable in non-CO₂ incubators, refrigerators and chambers
- Fixed speed of 18 or 20rpm (voltage dependent)
- Two year warranty

Specification and ordering information

Cat. No	15584070
Plug types	EU, UK, CN
Electrical	220V, 50Hz, 0.05A, 11W
Speed range	18rpm
Speed accuracy	±1rpm
Tilt angle	20°
Timer	0min to 99h 59min
Maximum weight capacity	0.8kg (1.8lb)
Shipping weight	6kg (13.2lb)
Display	LED
Tray material	Aluminium
Tray dimensions (L x W)	306 x 266mm, 12 x 10.5 inch
Overall dimensions (L x W x H)	415 x 293 x 273mm, 16.3 x 11.5 x 10.7 inch
Unit includes:	Dimpled rubber mat & six tube-securing bands



Certification: CE (88861042) & cCSAus (88861041)

3D Platform rotator

Fisherbrand 3D platform rotators provide smooth orbital motion for mixing in culture flasks, dishes, plates and tubes

- Simple speed adjustment from 2 to 80rpm
- Gentle movement ideal for staining gels without destroying the edges or keeping fragile tissue intact during incubation
- Large platform accommodates most commonly used vessels with non-slip mat to prevent sample movement
- Low voltage power supply provides safe cold room operation and low energy consumption
- Operating temperature range of 5°C to 40°C allows for use in refrigerators or non-CO₂ incubators
- Continuous or timed operation with automatic switch-off
- Display will show last used settings, even after power has been turned off
- Two year warranty



Specification and ordering information

Cat. No	15504080
Plug types	EU, UK, CN
Electrical	100-240V, 0.8A, 6.5W, 50/60Hz
Speed range	2-80rpm
Speed accuracy	±1rpm
Fixed angle	7°
Timer	0min to 99h 59min
Maximum weight capacity	0.8kg (1.8lb)
Shipping weight	6kg (13.2lb)
Display	LED
Tray material	Aluminium
Tray dimensions (L x W)	306 x 266mm, 12 x 10.5 inch
Overall dimensions (L x W x H)	415 x 293 x 170mm, 16.3 x 11.5 x 6.7 inch
Unit includes:	Dimpled rubber mat & six tube-securing bands

Certification: CE (88861046) & cCSAus (88861045)

Multi function 3D rotator

The Fisherbrand Multi Function 3D Rotator provides flexibility of motion to include rotation, reciprocal rotation, and vibration

- Rotation speed: 5 to 100rpm for long wave motion
- Reciprocal rotation: 0 to 360° turning angle for long and medium way motion
- Vibration: 0 to 5° turning angle, programmable in bursts of 0 to 5 seconds, for short wave motion
- Operating temperature range of 5 to 40°C allows for use in refrigerators or non-CO₂ incubators
- Continuous or timed operation with automatic switch-off
- Display will show last used settings, even after power has been turned off
- Applications include
 - Immunoprecipitations
 - Affinity matrix
 - Gel staining and destaining
 - Antibody staining
 - General washing
 - Hybridisations
 - Western and Southern blots
- Two year warranty



Specification and ordering information

Cat. No	15514080
Plug types	EU, UK, CN
Electrical	100-240V, 0.1A, 5W, 50/60Hz
Speed range	5-100rpm
Speed accuracy	±1rpm
Turning angle (reciprocal mode)	0 to 360°
Turning angle (vibration mode)	0-5°
Tilt angle	7°
Orbit diameter	23mm (0.9 inch)
Timer (orbital/360° vertical or reciprocal mode)	0 to 250 sec.
Timer (vibration mode)	0-5 sec (vibration) with 0-125 cycles
Number of cycles	0 to 250 sec.
Operating temperature	5 to 40°C
Maximum weight capacity	1kg (2.2lb)
Display	LED
Platform dimensions (working area) (D x W)	306 x 266mm, 12 x 10.5 inch
Overall dimensions (L x W x H)	415 x 293 x 225mm, 16.3 x 11.5 x 8.9 inch
Power supply	100-240V
Unit includes:	Dimpled rubber mat & six tube-securing bands

Multi purpose tube rotator

The Fisherbrand multi purpose tube rotator offers flexibility with multiple carousel options, adjustable speed, and an angled head for added versatility

- Digital microprocessor control
- Six carousel options for maximum versatility
- Adjustable speed from 5-80rpm
- Adjustable angled head offers mixing angles from 95 to 180°
- Timer features both time up and time down counting modes
- Display will show last used settings, even after power has been turned off
- Two year warranty

Specification and ordering information

Cat. No	15524080
Plug types	EU, UK, CN
Electrical	100-240V, 0.2A, 8W, 50/60Hz
Speed range	5-80rpm
Speed accuracy	±1rpm
Carousel angle	95-180° (six steps: 95°, 112°, 129°, 146°, 163°, 180°)
Carousel capacity	50 x 9-11mm tubes (1.5/2mL) 30 x 14-18mm tubes (15mL) 15 x 27-34mm tubes (50mL) 10 x 10-15mL and 20 x 5-7mL tube 64 x 18.5mm tubes (drum carousel) 64 x 14mm tubes (drum carousel)
Timer	0min to 99h 59min
Display	LED
Tray material	Aluminium
Tray dimensions	290mm dia. (Tube carousel)/310mm dia. (Drum tube carousel)
Overall dimensions (L x W x H)	415 x 293 x 464mm, 16.3 x 11.5 x 18.3 inch
Unit includes:	15 place tube carousel for 50mL tubes



Optional accessories:

Cat. No	Description
15554090	50 place tube carousel for 1.5/2.0mL tubes
15564090	30 place tube carousel for 15mL tubes
15574090	15 place tube carousel for 50mL tubes
15584090	10 and 20 place tube carousel for 10-15mL and 5-7mL tubes
15594090	64 place drum tube carousel for 14mm dia. tubes
15504100	64 place drum tube carousel for 18.5mm dia. 15-20mL tubes

Multi platform shaker

The Fisherbrand multi platform shaker has smooth orbital shaking and a wide variety of optional accessories for multiple applications

- Variable shaking speed: 50 to 450rpm
- Weight capacity 4.5kg (10lb)
- Automatic load balancing system
- Continuous or timed operation with automatic switch-off
- Maximum flexibility with many options for interchangeable accessories
- Simple set up and easy operation
- Display will show last used settings, even after power has been turned off
- Low voltage power supply provides for safe cold room operation and low energy consumption
- Operating temperature range of 5 to 40°C allows for use in cold rooms, refrigerators or non-CO₂ incubators
- Two year warranty



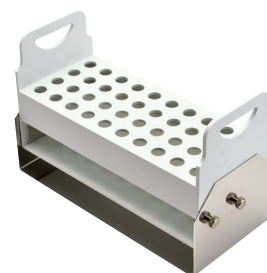
Specification and ordering information

Cat. No	15594060
Plug types	EU, UK, CN
Electrical	100-240V
Speed range	50-450rpm
Speed accuracy	±1rpm
Orbit	10mm (0.4 inch)
Timer	0min to 99h 59min
Operating temperature	5 to 40°C
Maximum weight capacity	4.5kg (9.9lb) (6 x 250mL flasks)
Display	LED
Tray dimensions (L x W)	310 x 284mm, 12.2 x 11.2 inch
Overall dimensions (L x W x H)	415 x 293 x 120mm, 16.3 x 11.5 x 4.7 inch
Unit includes:	Aluminium platform
Required accessories	Choose from flask clamps, bottle holders, universal platform with adjustable bars, tube racks, or flat platform with nonslip rubber mat

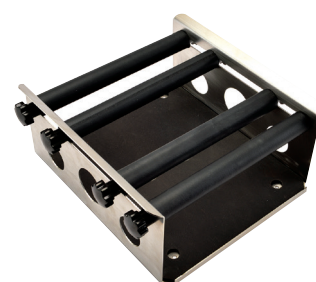
Note: Not for use in CO₂ incubators. Will void warranty.

Required accessories: these items must also be purchased as appropriate

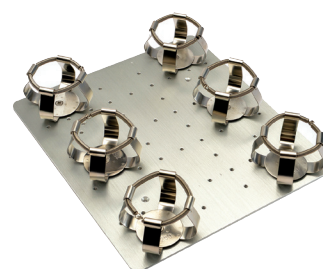
Cat. No	Description
15524100	Flat platform with non-slip rubber mat
15534100	Platform with clamps for 6 x 250mL flasks/150mL beakers
15544100	Platform with clamps for 12 x 100mL flasks/150mL beakers
15554100	Universal platform with adjustable bars
15564100	25mL stainless steel flask clamp
15574100	50mL stainless steel flask clamp
15584100	100mL stainless steel flask clamp
15594100	250mL stainless steel flask clamp
15504110	500mL stainless steel flask clamp
15514110	1000mL stainless steel flask clamp
15524110	2000mL stainless steel flask clamp
15534110	3000mL stainless steel flask clamp
15544110	5000mL stainless steel flask clamp
15554110	Sticky mat 14 x 14cm
15564110	500mL infusion bottle clamp
15574110	1000mL infusion bottle clamp
15584110	Funnel clamp
15594110	Fixed tube rack 40 x 14mm dia.
15504120	Fixed tube rack 40 x 16mm dia.
15514120	Adjustable angle tube rack 40 x 14mm dia.
15524120	Adjustable angle tube rack 40 x 16mm dia.



Fixed tube racks



Universal platform with adjustable bars



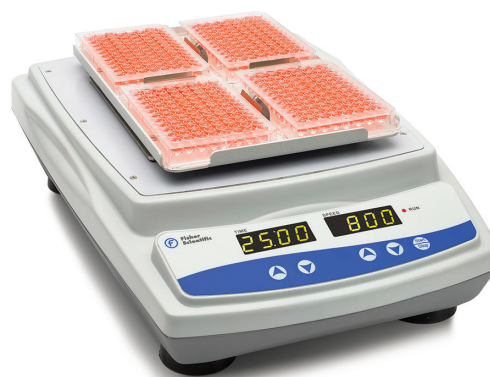
Platform with clamps

Certification: CE (88861022) & cCSAus (88861021)

Microplate shaker

The Fisherbrand microplate shaker is designed for convenience and flexibility

- Variable shaking speed: 150 to 1000rpm
- Quick and easy fitting of any standard-depth microplates
- Continuous or timed operation, with automatic switch off
- Display will show last used settings, even after power has been turned off
- Operating temperature of 5 to 40°C allows for use in refrigerators, cold rooms and non-CO₂ incubators
- Applications include
 - Immunoassays
 - ELISA's
 - Denaturation of nucleic acids and proteins
 - Staining and blotting
- Two year warranty



Specification and ordering information

Cat. No	15504070
Plug types	EU, UK, CN
Electrical	100-240V, 0.2A, 19W, 50/60Hz
Speed range	150-1000rpm
Speed accuracy	±1rpm
Timer	0min to 99h 59min
Operation temperature	5 to 40°C
Orbit	2.5mm (0.1 inch)
Display	LED
Maximum weight capacity	2kg
Tray dimensions	320 x 260mm, 12.6 x 10.2 inch
Overall dimensions (L x W x H)	415 x 293 x 143mm, 16.3 x 11.5 x 5.6 inch
Unit includes:	Four-place microplate clamps on aluminium platform

Optional accessories:

Cat. No	Description
15594110	Fixed tube rack 14mm dia. – 40 tubes max
15504120	Fixed tube rack 16mm dia. – 40 tubes max
15514120	Adjustable tube rack 14mm dia. – 40 tubes max
15524120	Adjustable tube rack 16mm dia. – 40 tubes max



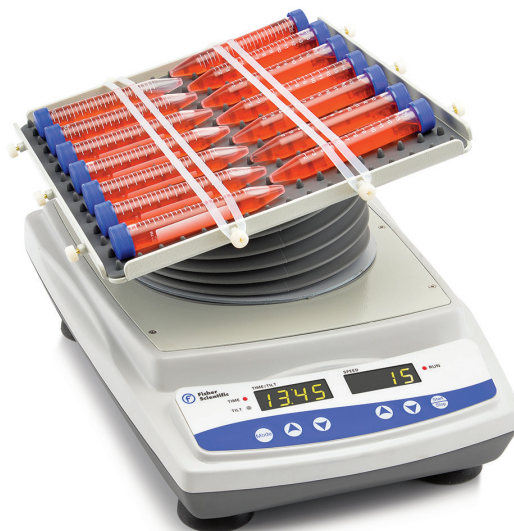
Tube rack

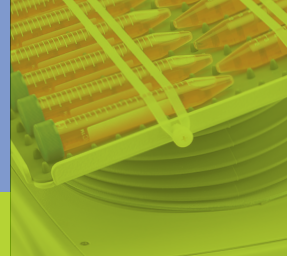
Certification: CE (88861024) & cCSAus (88861023)

Open air rocker

Fisherbrand open air rockers are ideal for cell culture work and can be used in a variety of environmental conditions

- The microprocessor control provides electronic tilt angle adjustment which allows the user to easily adjust rocking angle from 1 to 15° while unit is operating. Precise speed control provides smooth, low-speed rocking motion down to 1rpm
- Display will show last user settings, even after power has been turned off
- LED display: touchpad controls with easy-to-read symbols for speed, tilt angle, and time. Provides repeatable and accurate results. Timer will display elapsed time or, when programmed, will shut off unit when time reaches zero
- Audible and visual signals will activate when system detects an obstruction or overload of the tray
- Slowly increases speed to desired set-point to avoid splashing
- Operating conditions: usable in refrigerators, cold rooms or non-CO₂ incubators, maximum 80% relative humidity, non-condensing
- Applications include
 - staining and destaining gels
 - hybridisations
 - haematology and blotting techniques
- Two year warranty





Specification and ordering information

Cat. No	15514070
Plug types	EU, UK, CN
Electrical	100-240V, 0.1A, 13.5W, 50/60Hz
Tilt angle	1 to 15° (adjustable in 1° increments)
Speed range	1 to 50rpm
Speed accuracy	±1rpm
Timer	1 sec. to 9999min
Operation temperature	5 to 40°C
Maximum weight capacity	4.5kg (9.9lb)
Shipping weight	6kg (13.2lb)
Display	LED
Tray material	Aluminium
Tray dimensions (L x W)	306 x 266mm, 12 x 10.5 inch
Overall dimensions (L x W X H)	415 x 293 x 142mm, 16.3 x 11.5 x 5.6 inch
Unit includes:	Dimpled rubber mat & six tube-securing bands

Optional accessories:

Cat. No	Description
15584130	Stacking tray assembly for open air rocker
15594130	Dimpled rubber mat
15514140	Rubber mat

Certification: CE (88861026) & cSAus (88861025)

Wave motion shaker

Quiet operation shakers, suitable for a wide variety of applications

- Easy-to-adjust speed control with optimised low-speed operation
- Easy-to-adjust tilt angle with a single set screw adjustment
- Operating temperature range of 5 to 40°C allows for use in cold rooms or non-CO₂ incubators
- Continuous or timed operation with automatic switch-off
- Display will show last used settings, even after power has been turned off
- Quiet operation
- Two year warranty

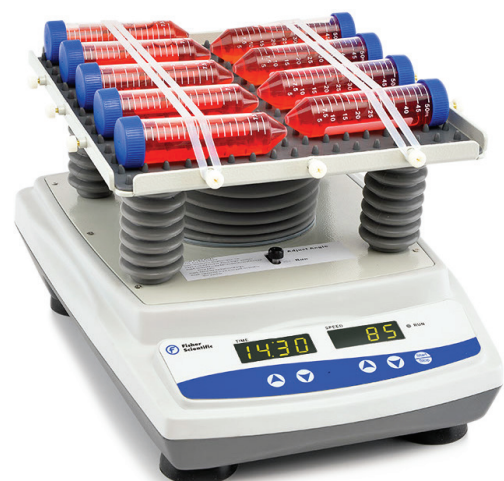
Specification and ordering information

Cat. No	15524070
Plug types	EU, UK, CN
Electrical	100-240V, 0.2A, 12W, 50/60Hz
Speed range	5-120rpm
Speed accuracy	±1rpm
Carousel angle	0-12° adjustable
Timer	0min to 99h 59min
Display	LED
Maximum weight capacity	9.8kg (22lbs)
Tray dimensions (L x W)	306 x 266mm, 12 x 10.5 inch
Overall dimensions (L x W x H)	415 x 293 x 209mm, 16.3 x 11.5 x 8.2 inch
Unit includes:	Dimpled rubber mat and six tube-securing bands

Optional accessories:

Cat. No	Description
15514140	Rubber mat

Certification: CE (88861028) & cCSAus (88861027)



NOTES



Fisherbrand™
QUALITY. RELIABILITY. VALUE.

Rockers, Rotators and Mini Shakers

Equipment for gentle sample mixing or agitation



© 2016 Thermo Fisher Scientific Inc. All rights reserved.
Trademarks used are owned as indicated at www.fishersci.com/trademarks.

Austria: (0)800-20 88 40 Belgium: +32 (0)56 260 260 Denmark: +45 70 27 99 20
Germany: +49 (0)2304 9325 Ireland: +353 (0)1 885 5854 Italy: +39 02 950 59 478
Finland: +358 (0)9 8027 6280 France: +33 (0)3 88 67 14 14 Netherlands: +31 (0)20 487 70 00
Norway: +47 22 95 59 59 Portugal: +351 21 425 33 50 Spain: +34 902 239 303
Sweden: +46 31 352 32 00 Switzerland: +41 (0)56 618 41 11 UK: +44 (0)1509 555 500



**Fisher
Scientific**

A Thermo Fisher Scientific Brand