

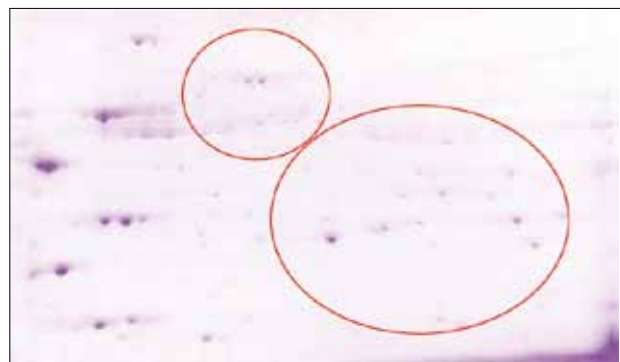
# Electrophoresis, Blotting and Immunodetection

## Gel visualisation, protein stains, Coomassie® based

### Imperial protein stain, Thermo Scientific Pierce

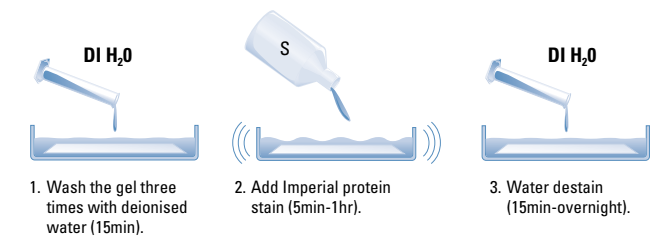


#### Imperial protein stain



**Thermo Scientific Imperial protein stain reveals spots that are faint or not detected with other coomassie stains.** Mitochondrial protein extract was prepared from heart tissue of six-week-old Sprague-Dawley rat. Processed protein extract (72 µg) was focused on a pH 5-8 IPG strip followed by 8-16% SDS-PAGE. The gels were stained for 1 hour and destained overnight following manufacturer-recommended protocols.

- A fast, sensitive and consistent Coomassie® stain.
- Sensitive - 3ng protein/band and less can be detected with the enhanced protocol (3hr)
  - Fast - detect as little as 6ng protein/band in just 20min
  - Robust - highly consistent, reproducible protein staining
  - Excellent photo-documentation - photographs/scans better than other coomassie stains
  - Mass spectrometry-compatible - stained spots and bands can be excised and treated just like with any coomassie stain



Thermo Scientific Imperial protein stain is a ready-to-use coomassie stain for the detection of protein bands in sodium dodecyl sulfate polyacrylamide gel electrophoresis (SDS-PAGE) and 2D gels.

The stain is a unique formulation of Coomassie® R-250 that delivers substantial improvements in protein-staining performance compared to homemade or other commercial stains. In addition to faster protein band development and more sensitivity than standard Coomassie® G-250 stains, this stain does not require methanol/acetic acid fixation and destaining, saving valuable preparation time and minimising reagent cost.

Catalogue No	Description
<b>PN24615</b>	<b>Imperial protein stain, 1L</b> Sufficient reagent to stain up to 50 mini-gels (80 x 100mm)
<b>PN24617</b>	<b>Imperial protein stain, 3 x 1L</b> Sufficient reagent to stain up to 150 mini-gels (80 x 100mm)

### Protein stains, Coomassie®, SimplyBlue™ SafeStain



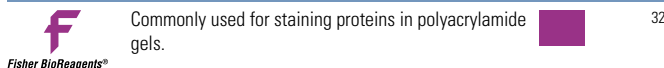
Sensitive staining results with SimplyBlue™ SafeStain  
Samples were separated on a NuPAGE® Novex 4 to 12% Bis-Tris gel, stained with SimplyBlue™ SafeStain for 1 hour, then destained overnight with the recommended water-based destain.

Ready to use, fast, sensitive, and safe Coomassie® G-250 stain for visualising protein bands on polyacrylamide gels.

This stain eliminates extensive solution preparation time and expenditure. Unlike traditional R-250 and some G-250 Coomassie® stains, SimplyBlue™ SafeStain is completely non-hazardous and does not require methanol or acetic acid fixatives or destains. Risk of hazardous exposure and unpleasant odours are eliminated, creating a healthier lab environment. The SimplyBlue™ SafeStain protocol is easy to perform and can be completed in less than 3hr. For added speed, a simple microwave procedure can be completed in 12min. Destaining is not required, but may be performed to achieve maximum sensitivity, especially when performing downstream analysis such as mass spectrometry or when a crystal clear background is required. One microgram of protein can be detected after just 5min in the stain. With additional water-based destaining, as little as 7ng of protein (reduced BSA) can be detected.

SimplyBlue™ SafeStain	
Fast, sensitive, and safe Coomassie® protein stain	
Catalogue No	Quantity
<b>VXLC6060</b>	1L (1L provides sufficient reagent to stain 50 mini gels)
<b>VXLC6065</b>	3.5L (with pump dispenser)

### Coomassie® Brilliant Blue R-250

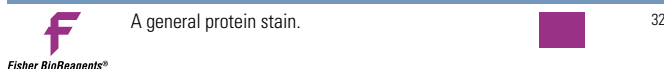


Catalogue No	Quantity
<b>BPE101-25</b>	25g
<b>BPE101-50</b>	50g

$C_{45}H_{44}N_3O_7S_2Na$  M.W. 825.99

Coomassie® is a registered trade trademark of ICI plc.

### Coomassie® Brilliant Blue G-250



Catalogue No	Quantity
<b>BPE100-25</b>	25g
<b>BPE100-50</b>	50g

$C_{47}H_{48}N_3O_7S_2Na$  M.W. 854.01

Coomassie® is a registered trade trademark of ICI plc.